

CEPT CONFERENCE
**URBAN
DESIGN**
IN INDIA

COMPENDIUM /2024

#CEPTCONFERENCE
#URBANDESIGNININDIA



CEPT CONFERENCE
**URBAN
DESIGN**
IN INDIA

ORGANISERS

CRDF CEPT RESEARCH
AND DEVELOPMENT
FOUNDATION

CEPT
UNIVERSITY

COMPENDIUM /2024

**#CEPTCONFERENCE
#URBANDESIGNININDIA**

CEPT CONFERENCES

CEPT Conference aim to promote knowledge exchange, collaboration, and interdisciplinary research in urban design, planning, and policy and management. By bringing together stakeholders from diverse backgrounds, the conferences facilitate the advancement of sustainable and equitable urban development. The platform provides a forum for unbiased discussions, advances knowledge and new ideas, influences positive change in public policy, exposes students to professionals and policymakers, and offers networking opportunities. We are dedicated to working towards solutions to India's urban challenges through collaboration and collective action.

The conferences are organised by CEPT Research and Development Foundation (CRDF), the research arm of the University, engaged in research projects, advisory assignments and capacity building initiatives aimed at solving critical problems in the built environment and human habitats.

#ceptconferences
#urbandesigninindia

ABOUT

UDI CONFERENCE

Urban environment in India is changing rapidly and our cities are witnessing a visible transformation that is improving the quality of life in the cities. Urban planners and designers are increasingly identified as the changemakers who are engaged by cities to provide creative and efficient articulation of urban spaces. The country has, in the last few years, slowly but recognised urban design as a profession, over and above a discipline or a domain of knowledge. Many urban local bodies have created positions for urban designers and many others have started hiring them for design, co-ordination, and implementation of new and existing public spaces.

There is clearly growing awareness that experiential urban design makes positive linkages between a long-term perspective of city's spatial planning and infrastructure development. However, India's cities vary widely in terms of population density, geographical features, and cultural heritage. Thus, implementing urban design projects in India requires a multifaceted approach that addresses the country's diverse conditions. On one hand, engaging with local community becomes critical while on the other, ensuring equitable access to infrastructure presents a challenge. Establishing collaborative governance structures that facilitate coordination and decision-making among the diverse stakeholders becomes essential for effective implementation.

Since the last couple of years, the 'Urban Design in India' conference has created a platform for the professionals to share the unique and varied types of projects. This year's edition hopes to offer the dais to urban design practices from across the country to share the challenges and wins during the project cycle or implementation. The conference would allow sharing of lessons and ideas that would benefit professionals, academicians, and students alike and help strengthen the narrative of urban design in India.

CONFERENCE AGENDA

8th May 2024

Venue – Balwantraoi N. Brahmbhatt Lecture Hall, CEPT University, Ahmedabad

8:30 a.m. – 9:45 a.m	Registration and breakfast
9:45 a.m. – 9:50 a.m.	Welcome note by Purvi Chhadva
9:50 a.m. – 10:00 a.m.	Opening Address by Barjor Mehta
10:00 a.m. – 11:00 a.m.	Session 1
	Cities Tell Stories
(15 mins)	Sujata Hingorani
	The Joys of Applying Urban Design Theory in Practice
(15 mins)	Sarfraz Momin
	Urban Design as a tool for strategic outcomes
(15 mins)	Manushi Jain & Niveda Ramesh
(15 mins)	Q&A
11:15 a.m. – 11:45 a.m.	TEA BREAK
11:40 a.m. – 1:00 p.m.	Session 2
	Curating safe, shaded & socially active spaces in the public realm
(15 mins)	Prasanna Desai
	Urban Oasis: Enhancing Livability through Innovative Public Space Design
(15 mins)	Shruti Purohit
	Rethinking Urban Revitalization
(15 mins)	Nishant Lall
(15 mins)	Q&A
1:00 pm – 2:15 pm	LUNCH BREAK

2:15 pm – 3:15 pm

Session 3

Urban expansion - Rajkot Smart City

(15 mins) Saumil Mewada

Place People Practice

(15 mins) Nishita Parmar & Kishan Shah

Accessible Cities

(15 mins) Shravan Kumar

(15 mins) Q&A

3:30 pm – 4:00 pm

HIGH TEA

2:15 pm – 3:15 pm

Session 4

Beachfront Development at Daman

(15 mins) Ankit Mehta

Bridging Scales in Urban Design: Challenges and Opportunities in Indian Urban Scenario

(15 mins) Vishal Shah

Mahanadi Waterfront Rejuvenation

(15 mins) Nithya Ramesh

(15 mins) Q&A

5:15 pm – 5:30 pm

**CONCLUDING NOTE / VOTE OF THANKS BY
NARENDRA MANGWANI**

5:30 pm Onwards

Exhibition tour guided by the students

6:30 pm Onwards

**Exhibition inauguration
Maps in History: Urban transformation of Ahmedabad**



CEPT
UNIVERSITY

WELCOME NOTE BY BARJOR MEHTA

We foster informal conversations among professionals and practitioners, believing that our work speaks for itself. Our aim is to provide a platform for students to observe and learn from the diverse professional work in the domain of urban design. In a country with such a handful of structured professional conversations on urban design, we strive to fill this gap and support the profession to grow holistically.

We encourage everyone attending this conference to explore the CEPT summer exhibition, showcasing both design and technology, reflecting our unique pedagogical approach and problem-solving methodologies. For instance, our engineering programme stands out as one of the few in the country to impart solid engineering skills through studio-based learning. Such an approach is essential for India to establish its professional identity on the international stage.

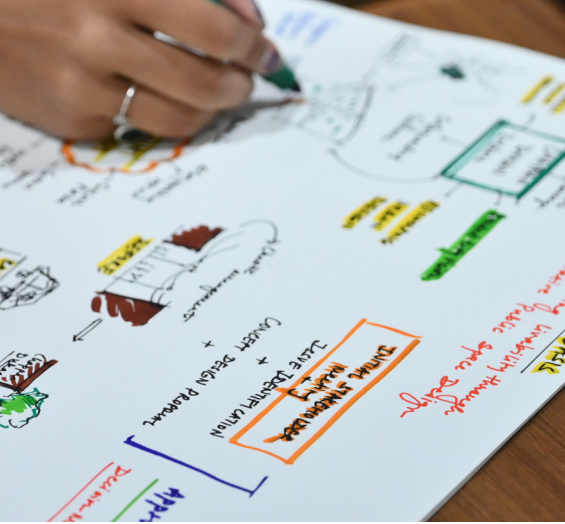
A woman with dark hair and glasses, wearing a blue patterned scarf, is speaking at a large, curved wooden podium. The podium features a silver plaque with the text "CEPT UNIVERSITY". A microphone is positioned in front of her. The background consists of a dark wall with white line art of buildings and a large screen displaying a map of India.

CEPT
UNIVERSITY

WELCOME NOTE BY PURVI CHHADVA

Indian cities are experiencing a visible transformation and enhancing the quality of urban life. Urban designers are increasingly being recognized as key influencers for shaping the urban spaces creatively. Despite gradual recognition, 'urban design' has evolved into a distinct profession beyond a mere discipline. The annual 'Urban Design in India' CEPT Conference provides a nation-wide platform for urban design professionals and practitioners to showcase their work, exchange ideas and celebrate successes. This fosters collaboration amongst the fraternity including academicians and students.

The Urban Design Programme at CEPT University mirrors this collaborative spirit, and many of the speakers at this conference have been our partners and are still connected with us in different capacities. It is a proud moment for CEPT University that a student group from the Urban Design Programme recently gained international acclaim on getting selected as one of the finalists of the Urban Land Institute (ULI) Asia Pacific Student Competition.







Session 1

Cities Tell Stories

Sujata Hingorani

The Joys of Applying Urban Design Theory in Practice

Sarfaraz Momin

Urban Design as a tool for strategic outcomes

Manushi Jain & Niveda Ramesh

OASIS DESIGNS

oasisdesigns.org



@oasis.designsinc



@Oasis Designs Inc

ABOUT

Oasis Designs Inc. is a master-planning, urban design, architecture, and landscape design consultancy firm based out of Delhi. The firm specialises in creating nature-oriented urban public realms across India and brings in a multidisciplinary approach with sustainable mobility, master-planning. They transform derelict landscapes into usable public common space and ecological design to create unique context-specific destination. Their work, recognised at various forums, has won several awards, including the IIA Architect of the Year awards in 2012 and 2018. With two decades of experience, they continue to redefine open-space standards and look forward to tackling bigger city-level challenges.



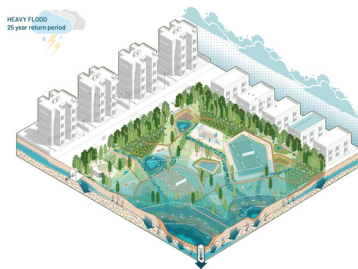
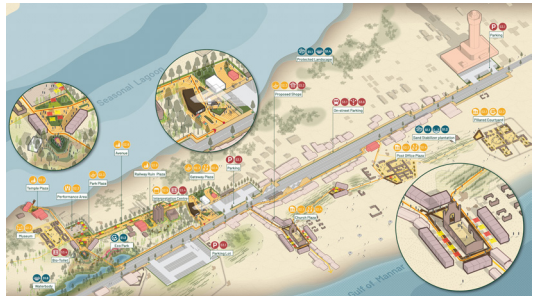
Sujata Hingorani
Co-Founder |
Landscape Architect

With over 20 years of experience, she leads the design team, envisioning sustainable, biophilic public realms across India. Under her leadership, Team OASIS has delivered numerous successful projects, including the Sabarmati Riverfront Park, Ahmedabad, and the eco-restoration of eight lakes for Coimbatore Smart City. Her ongoing work includes projects for Srinagar Smart City and Chennai Mega Streets. Sujata's vision continues to shape India's urban landscapes.

CITIES TELL STORIES

'Urban design as a tool for strategic outcomes' : As a multidisciplinary practice, Sponge Collaborative leverages the expertise of urban design to propel strategic outcomes in the fields of urban & regional planning, resilient public infrastructure and sustainable tourism.

The proposed vision for Dhanushkodi Town prepared for Tamil Nadu Tourism Development Corporation (TTDC) is a combination of key projects that exemplify the integrated approach for tourism development and planning. This graphic explains how various strategies are spatially envisioned with plazas, parks, pause points, experience centres etc., to create a holistic tourism masterplan.



A sponge park is envisioned as an open space that performs as 'Multi-functional Infrastructures' which include strategies for urban stormwater management, groundwater recharge techniques and enhance user experience through thoughtful placemaking initiatives for learning, wellness and recreation. The graphic explains how an integrated sponge park can perform during a cloudburst scenario.

CITIES TELL STORIES

'Cities Tell Stories: We Listen and Respond' emphasises moving beyond evidence-based urban management, advocating for ecological balance and compact, efficient design. It highlights the importance of integrating qualitative insights and symbolic narratives to create truly habitable, sustainable cities.

Successful cities have long existed before empirical studies and quantitative reasoning, thriving due to design based on cognitive and sensory responses. Henry Corbin's 'Emblematic Cities' demonstrated that these intuitive cities featured characteristic networks, compact development, distinct public areas, and a habitable urban grain. The advent of the industrial revolution brought a mechanistic approach to urban planning resulting in car-centric and inaccessible cities. Various urban issues like drainage, parking, and climate challenges stem from a 'single vision' approach rather than a more holistic 'universal vision' of urban development.

Oasis Design Inc.'s projects illustrate their commitment to create people-centric urban spaces through an interdisciplinary approach, integrating diverse disciplines to enhance community and well-being. The project - 'Redesigning Street and station areas around metro stations' reclaimed public spaces, and promoted pedestrian networks through urban design strategies. Similarly, the street design of the Inner Ring Road in New Delhi was given a unique identity with such interventions.

Coimbatore

Mapping and understanding the cascading water systems from the Chola period, the team collaborated with stakeholders to develop urban design strategies aimed at preserving ecology and creating a connected urban realm. With a vision to 'Restore - Rejuvenate - Reconnect', a comprehensive phase-wise plan was proposed involving conservative surgeries on existing water systems, establishing an ecological buffer around the lake, enhancing imageability and contextual linkages, and fostering contextual placemaking. There were challenges for implementation of these proposals which the team overcame and could achieve the desired outcomes.

Srinagar

Driven by the Smart Cities Initiative, the redesign proposals for Jehangir Chowk and Lal Chowk focused on contextual relevance, restoring the city's imageability, and reclaiming public space for people's use. The Clock Tower at Lal Chowk was restored as an anchor, enhancing its sense of place and character, transforming it into a memorable public space for the city. Urban design and landscape architecture are essential partners in shaping the city's form and function. Together, they play a crucial role in creating sustainable, vibrant, and people-centric urban environments.

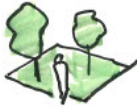
CITIES TELL STORIES

We listen, We respond...

Sujata
Hingorani
Oasis

URBAN DESIGN

♥
MENTAL HEALTH



Open space/person.
- 9 sq.mt.

- Mumbai 1:1 sq.mt/person.



Emblematic cities
- Henry corbin.

"The
Restorative
Cities.

- INCLUSIVE
- GREEN
- BLUE
- SENSORY
- ACTIVE
- PLAYABLE

Each city has a unique DNA

- Planning gram of the city
- Heritage
- Scale.
- Response to natural features.
- Character.

IDENTITY

CONTEMPORARY

INTERRELATIONSHIP

DELHI NCR

"Labor market"

Metro station

Parking

Drop off

plaza

High
market
potential

PARKING

PARKING

StudioPOD

studiopoddesign.com



@studiopod_global



@StudioPOD

ABOUT

StudioPOD specialises in creating vibrant, sustainable, and community-driven urban spaces, collaborating with all stakeholders to deliver design excellence. Based in India, StudioPOD champions urban design and landscape urbanism in the public and private sectors, advocating for the importance of a high-quality public realm. The team is composed of multi-disciplinary professionals with different skill sets, working together on innovative projects of varying scales.



Sarfaraz Momin
Co-Founder | Urban
Designer

Sarfaraz Momin is a trained urban designer & Architect with 19 years of international work experience. He specialises in balancing urban design and landscape with detailed land use programme development in community based master plans. Additionally he specialises in streetscape design and integration of transit projects with the surrounding areas.

As part of StudioPOD, Sarfaraz leads several large scale urban design and master planning projects for both government and private sectors. He has extensive experience of working on international projects in countries like USA, Russia, UAE, Vietnam, Hong Kong, China, and India.

THE JOYS OF APPLYING URBAN DESIGN THEORY IN PRACTICE

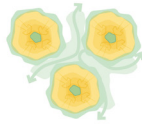
The integration of theory and practical planning, which is widely being considered as an integral part of the design process around the world. This is essential as it seamlessly connects the complex nature of cities and urban development with contextual and historical understanding as well as the necessity of creating sustainable and resilient settlements.

Without a strong theoretical base, practice loses its intellectual rigour and merely becomes a tool for unchecked urban development. At the same time, without a practical approach, theory and academia lose their ability to have any significant impact on society. Theory and practice should be linked in Urban Design such that theory can inform practice and practice can inform theory, to create healthy, equitable and livable cities for everyone.



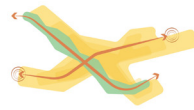
Green Fingers

Developed with penetration of surrounding open spaces within the settlement and vice versa



Cellular City

Developed as self sustained neighbourhoods, with active nuclei or neighbourhood centres and extends within comfortable commuting distances



Spine City

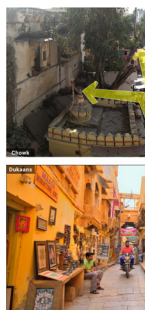
City developed along linear spines running across cities, defined by transit, open spaces, landmarks, commercial districts etc.



Understanding historic development of cities and applying it master planning



Interpreting cultural and historical context in design



Applying Landscape Urbanism theory in design

THE JOYS OF APPLYING URBAN DESIGN THEORY IN PRACTICE

For StudioPOD, 'Community' and 'Sustainability' are two critical aspects for any urban design project. StudioPOD consider themselves 'hopeless romantics' in urban design, finding beauty and inspiration in small details like lanes, transit systems, and landmarks.

There is a need for cities to be vibrant, resilient, and seamlessly integrated with their natural and cultural surroundings. In cities people and nature must coexist harmoniously, with a focus on creating inclusive, accessible, and sustainable urban environments for future generations. The importance of resilience and ecological solutions for our cities has become even more important in the current context. One should have a vision of creating cities where ecosystems thrive, children connect with nature, and history is respected. The case of transformation of a polluted Nala into a green stream was discussed, drawing inspiration from Indian village structures for placemaking and human-scale design.

The approach to urban design includes a mix of theory - such as Rome's Nolli Plan, and practical solutions to create interactive public spaces and connected communities. There is a dire need for joyful and sustainable urban design that respects both nature and human scale, advocating for a future of compact and walkable neighbourhoods. There should be a holistic approach to urban design that blends theory, sustainability, and placemaking, with a focus on creating vibrant, resilient cities that blend seamlessly with their natural and cultural surroundings.

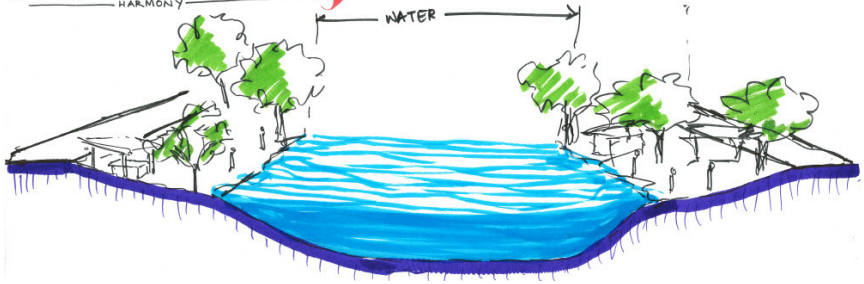
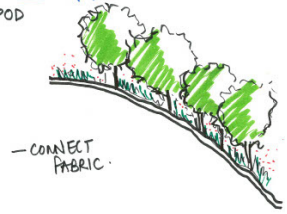
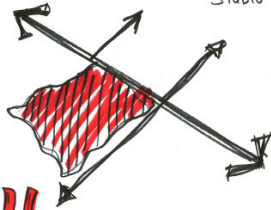
THE JOY OF APPLYING URBAN DESIGN THEORY IN PRACTICE

- by SARFARAZ MOMIN
STUDIO POD

- THING THAT SCARED:

livability
LIVABILITY

harmony
HARMONY



SPONGE COLLABORATIVE

spongecollaborative.com



@spongecollaborative



@spongecollaborative

ABOUT

Sponge Collaborative is a multi-disciplinary planning and design firm that adopts a systems approach with focus on ecology & community. We specialise across the verticals of strategic planning, urban design, climate-responsive architecture, landscape architecture, spatial analysis, and sustainable community development. Currently, Sponge Collaborative is engaged in projects across disciplines with various gov't and multilateral agencies to realise integrated planning frameworks, built & open space projects in various cities.



Manushi Jain

Co-Founder | Director

She is an Architect & Urban Designer. She received her Master's in Architecture and Urban Design from Pratt Institute, NYC. Since 2012 she has actively worked on a wide range of design projects around the world, with expertise in Strategic Urban Design, Environmental Planning & Architecture. She is featured on Forbes magazine's '30 under 30' Young Leaders for 2022.



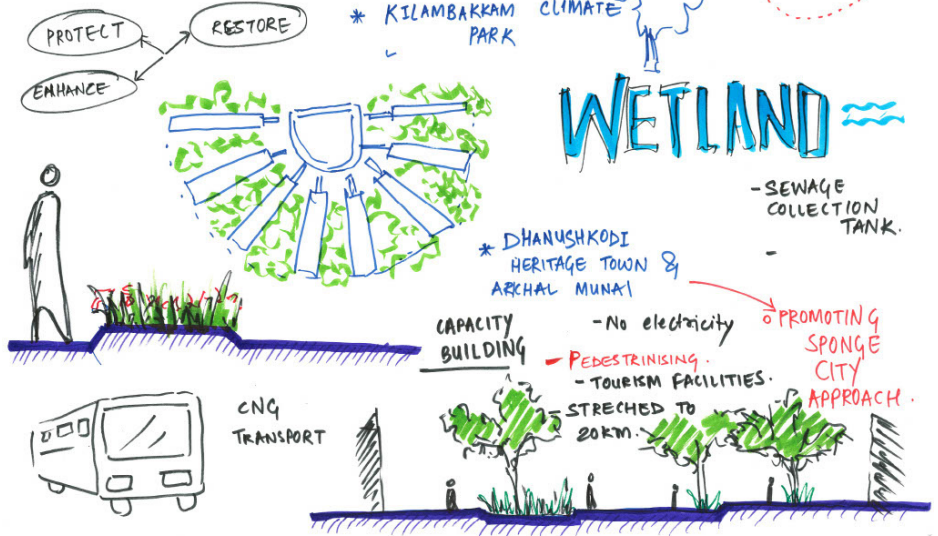
Niveda Ramesh

Associate | Urban Design

Niveda, an urban designer and architect, holds a postgraduate degree in Urban Design from CEPT University. With experience across various project scales, climate resilience is central focus of her work. As an associate at Sponge Collaborative, she oversees large-scale projects for CMDA and other ULBs. She received awards for 'Best Capstone Project' and 'Academic Excellence' at CEPT.

URBAN DESIGN AS A TOOL FOR STRATEGIC OUTCOMES

by Mausli, Niveda.
SPONGE COLLABRATIVE



PEDESTRIANISE.



Green Mobility Stretch

walkability

→ Basic Amenities in interventions

→ Bathrooms

→ Pause points

→ Ecology.



PROTECTED

SPONGE APPROACH.



Disaster Risk Mitigation fund.

More about leveraging outcomes & influencing rather than building physical outcomes.

Paralled Activity

→ Heritage Nature Trails



25 crores

BLUE-GREEN INFRASTRUCTURE

STORMWATER STREETS

Reducing Urban Heat Island Effect.
Food Mitigation.

150 sponge parks in 2 Months

URBAN DESIGN AS A TOOL FOR STRATEGIC OUTCOMES

As a multidisciplinary practice, Sponge Collaborative leverages the expertise of urban design to propel strategic outcomes in the fields of urban and regional planning, resilient public infrastructure and sustainable tourism.

Realising catalytic public infrastructure

The Kilambakkam Ecological Park, near Vandalur zoological park, is a climate and archaeological interpretation centre showcasing Tamil Nadu's diverse landscapes. It serves as an educational hub to raise awareness about native landscapes. The park features a central platform connecting various landscape-themed zones with retention ponds and swales, emphasising nature-based solutions, which require extensive coordination to implement. The Urban Wetland Park in Porur, Chennai, situated within a university campus, aims to restore local wetlands and create a community awareness hub. The design incorporates a boardwalk connecting various interpretation zones, transforming a vehicle-dominated area into a pedestrian-friendly space, reviving the wetland's permeable nature.

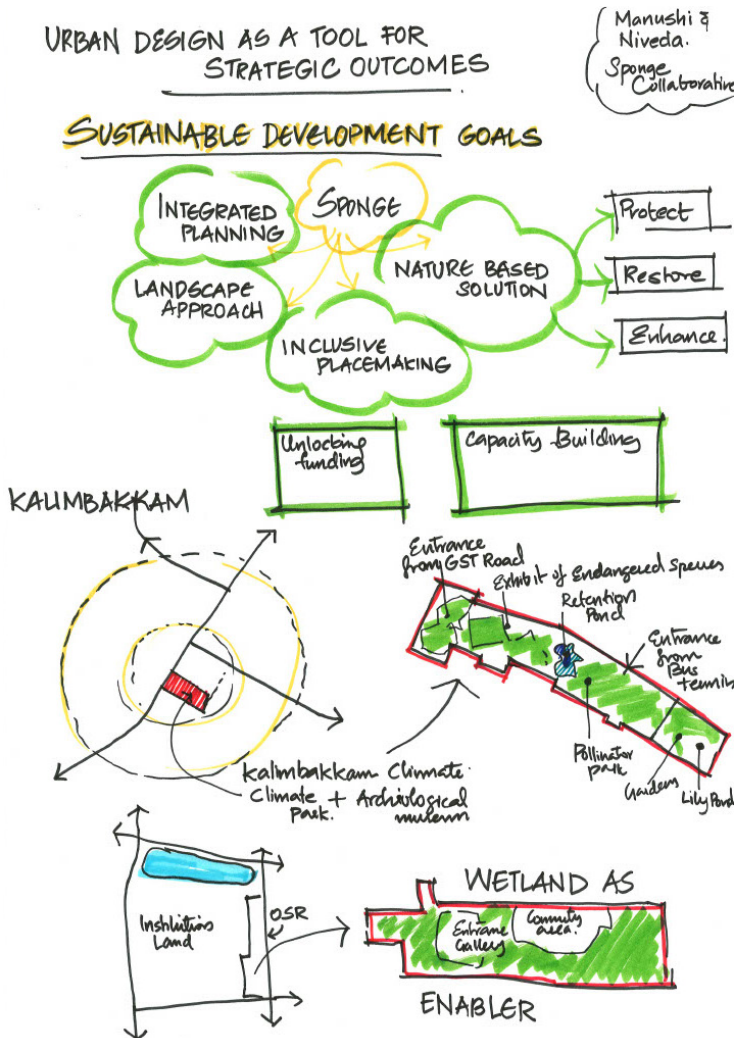
The Chennai Lakes restoration project, particularly the Integrated Lakefront Development Project in Perumbakkam Lake, employs a holistic approach through three frameworks: Restore (hydro-ecological), Connect (mobility), and Engage (community-centric). The project aims to restore ecological balance while creating public spaces, incorporating biodiversity parks, wetland edges, and sewage treatment plants to enhance water quality and ecological health. These projects highlight nature-based solutions and native landscapes in public infrastructure, serving as proof of concept for larger urban visions.

Unlocking funding and decision making

Dhanushkodi, Rameswaram with 3.3 million annual visitors faces ecological challenges due to inadequate infrastructure. The Master Plan for the 20 kilometres stretch of Dhanushkodi emphasises ecological resilience, heritage, and recreation. Key strategies include green mobility, heritage conservation, and sustainable tourism development. A major intervention includes pedestrianising Arichal Munai and creating a green mobility stretch with EV or CNG public shuttles. The project secured adequate funding for a strategic action plan, proposing trails emphasising heritage, culture, and nature. Additionally funding to the tune of INR 34 Crores were obtained from disaster risk mitigation funds for a sponge city pilot project, promoting blue-green infrastructure.

Capacity building and systematic shift

Dhanushkodi, Rameswaram with 3.3 million annual visitors faces ecological The Greater Chennai Corporation (GCC) began implementing the sponge city park approach, revealing a gap between intention and construction. To bridge this, capacity building within the organisation is crucial. Utilising GIS studies, a priority matrix for the city was developed, and manuals and guidelines for sponge parks were created. These documents will serve as training manuals, ensuring successful implementation and scalability of the pilot project.





Session 2

Curating safe, shaded & socially active spaces in the public realm

Prasanna Desai

Urban Oasis: Enhancing Livability through Innovative Public Space Design

Shruti Purohit

Rethinking Urban Revitalization

Nishant Lall

PRASANNA DESAI ARCHITECTS

prasannadesaiarchitects.
blogspot.com



@prasannadesaiarchitects



@prasannadesaiarchitects

ABOUT

Prasanna Desai Architects is an Architectural and Urban Design practice that works in public domain to create Healthier and Socially Integrated Cities. The practice emphasis the role of an architect in the public domain. Their efforts have led to numerous success stories of well-designed and implemented streets in India, where these streets have turned into vibrant public spaces for the neighborhood & have helped in resolving conflicts and improving the character & quality of life.



Prassanna Desai
Architect | Urban
Designer

Prasanna Desai emphasises the role of an architect in the Public Domain with a peopleparticipatory approach focusing on Equity and Empathy. He is an inspiring teacher and has been active in academics for the last 4 decades. He firmly believes that an Architect who is trained to be a sensitive person also needs to be an aware citizen, thus playing a much more significant role in the development of society and contributing considerably to the betterment of the quality of the built environment in the cities.

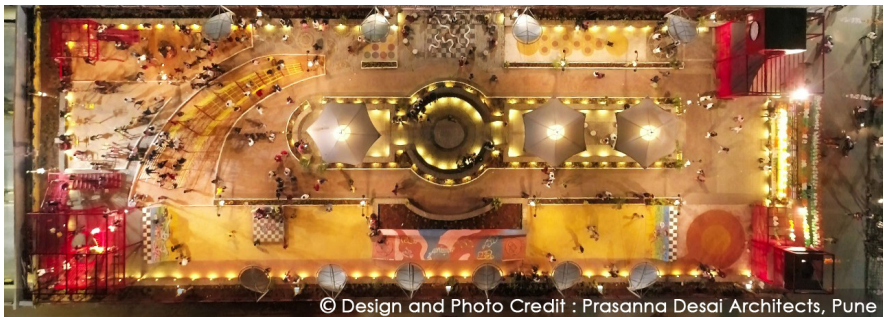
CURATING SAFE, SHADED & SOCIALLY ACTIVE SPACES IN THE PUBLIC REALM

The 8 km long recreational spine in Pimpri Chinchwad includes multiple public placemaking locations. These include the space around the national flag, a sports zone below the flyover, a 4km long linear garden along with junction development and reorganisation.

The spine culminates with the the 8 to 80 park acting as the nerve centre for all the citizens of all age groups. The 8km long corridor which has varying land use such as Defence establishments, Commercial Shopping, Residential Complexes & a Linear Garden from Rajiv Gandhi Bridge to JRD Tata Flyover and now has seamless Vehicle, Pedestrian and Cycle Connectivity incorporating Universal Accessibility norms bringing the social inclusion.

The project has surely helped in increasing the pedestrian & Cycle footfall thus improving the happiness & health index of the citizens and also enhanced the property values in the neighbourhood.

Also presenting is the urbanscape development in Baramati which demonstrates how small towns are also craving for upgradation of their public realm.



© Design and Photo Credit : Prasanna Desai Architects, Pune

CURATING SAFE, SHADED & SOCIALLY ACTIVE SPACES IN THE PUBLIC REALM

It is pertinent to ask the question - “Where do people walk?” to understand people’s inherent tendency of walking where there are designated pathways. The widespread presence of tarred roads has often increased difficulties for pedestrians in urban settings. Therefore, it is essential to follow the fundamentals of street design for quality and walkable urban streets.

Pimpri Chinchwad Municipal Corporation - Smart Mission

The main objective of this project was not just to create ideal and functional streets, but to establish excellent ones that ensure smooth movement for all. Design elements to ensure universal accessibility providing sufficient shaded areas and seating arrangements etc. were included with inputs from local stakeholders. A significant emphasis has been placed on prioritising cyclists with wider networks allocated on primary roads and highways.

The project encompassed 8 kilometres stretch and incorporated 18 elements from the Smart City Mission - including cycle tracks, street furniture, parking, and bus stops. Challenges in execution were addressed through innovative methods such as ‘Fakki lime marking’ for precise delineation of movement lines. Innovative junction designs were implemented incorporating sports facilities beneath the flyovers for better social interaction. The analogy of “Our Street as an Ocean of Tar” encapsulates the project’s vision for creating cohesive and efficient urban spaces. The project has surely helped in increasing the pedestrian and cycle footfall thus improving the happiness and health index of the citizens and enhanced the property values in the neighbourhood.

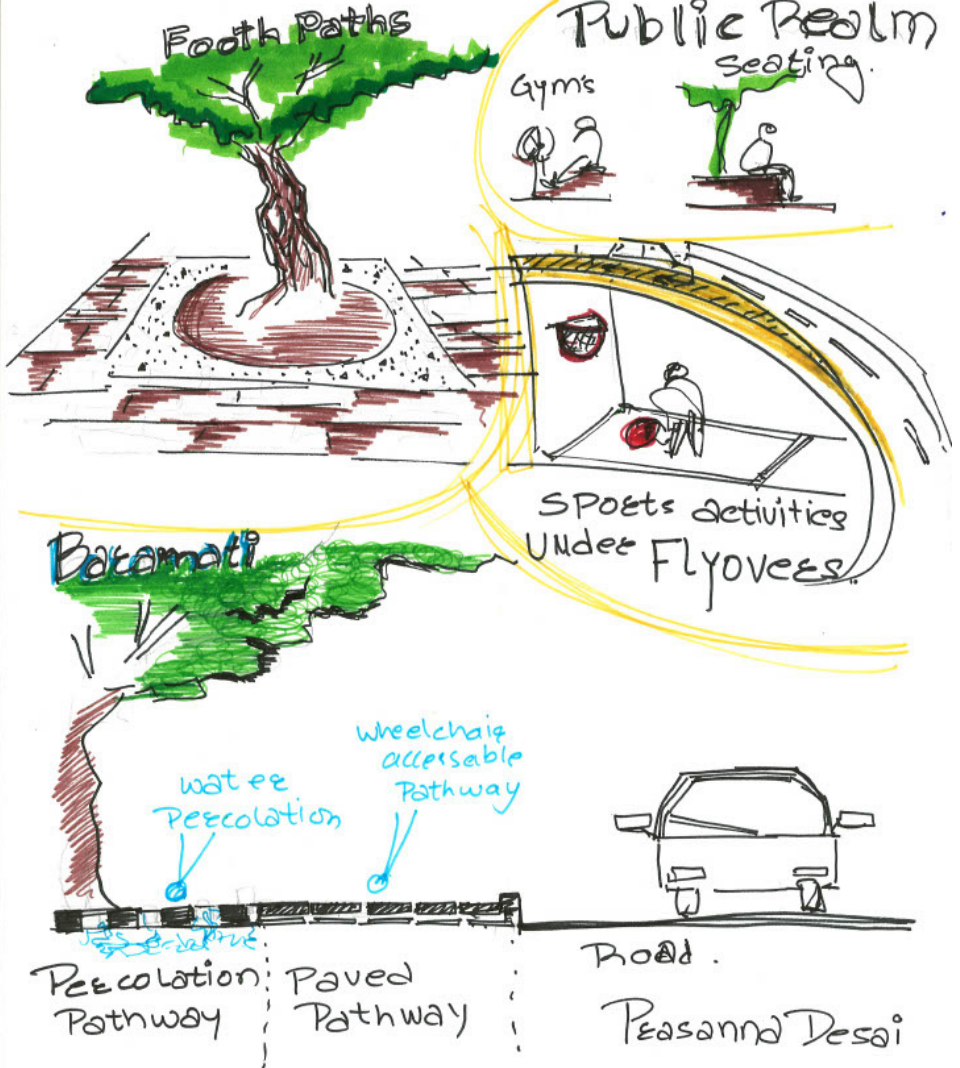
Understanding Core City AreasBaramati - Creating a Street for All

The urbanscape development through this project in Baramati demonstrates how small towns also crave for upgradation of their public realm. It could bring a remarkable shift in the urban realm through conversion of a parking lot to a well-designed public park. It is important to have well-designed open public spaces and by removing the compound walls the design enables creating welcoming edges.

“The depth of the democracy is decided by the width of the footpath in the city”.

SRII

CURATING Safe
in city of Pune.



NINE SQUARES



@9squaresarchitects



@9 Squares Architects

ABOUT

Nine Square Architects is committed to design and service without boundaries, reflecting the highest standards of professional practice. Dedicated to all aspects of the creative process, they work without limitations on project type, budget, approach, or outcome. Serving private individuals, commercial, public, and institutional organizations, they consistently exceed client expectations. Their approach builds trust and invites long-term partnerships and collaborations. Their core vision embodies a commitment to the creative process, transcending traditional boundaries and fostering innovative design solutions. Nine Square Architects Pvt. Ltd. is a testament to the transformative power of design.

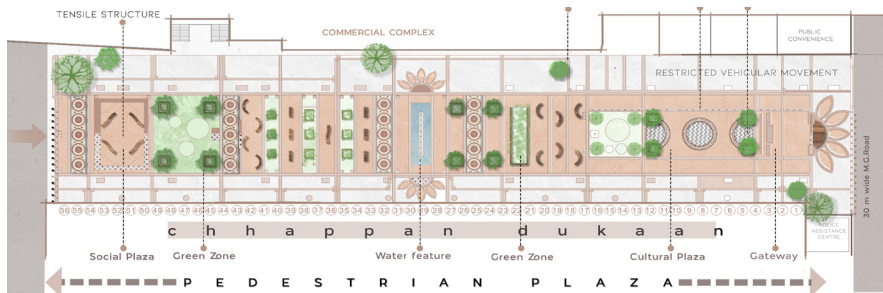


Shruti Purohit
Managing Director |
Architect and Planner

Shruti has over 25 years of experience, is the Founder, Owner, and Managing Director of Nine Squares Architects, Indore. An architect, urban planner, and interior designer, she has a Masters degree from the School of Planning & Architecture, New Delhi, and a B.Arch. degree from MANIT, Bhopal. She has worked on a wide range of projects and is a recipient of numerous awards, including The WADE Asia 2022 for Urban Design. Her firm, Nine Squares Architects, provides all consultancy services under one roof.

URBAN OASIS: ENHANCING LIVABILITY THROUGH INNOVATIVE PUBLIC SPACE DESIGN

Chhappan, a food lover's paradise, is Indore's first fully pedestrianized public hub. Iconic entry points, revamped shop facades, added greenery, and a striking geometrical flooring pattern have transformed the area's aesthetic appeal. Completed within 56 days, this project showcases exemplary placemaking. As a pioneering model for people-centric public spaces, it sets a new benchmark for urban development, creating a warm and welcoming destination where citizens feel a deep sense of belonging and pride.



Fully Pedestrianized Plaza with different activity zones



The plaza boasts integrated landscaping and seating areas



Floor plane has been accentuated by geometric flooring patterns



Landmark feature at entry point enhances visual identity with clear segregation of pedestrian zone. Redesigned shop facades significantly boost the area's aesthetic appeal.

URBAN OASIS: ENHANCING LIVABILITY THROUGH INNOVATIVE PUBLIC SPACE DESIGN

“Do governments have departments for public safety or public life?” It posits that you get what you invite; for instance, inviting cars results in cars, while inviting bicycles results in bicycles.

‘Chhappan Dukaan’ - Indore

Indore embarked on a significant placemaking project called ‘Chhappan Dukaan’ (56 shops), which emphasises a deep respect for heritage, a modern lifestyle, and a passion for development. This 130-metre stretch, primarily consisting of commercial food shops, was redesigned with revamped shop facades, iconic entry points, green spaces and a striking geometric flooring pattern transforming the area's aesthetic appeal.

For this project, the government, shopkeepers, and consultants collaborated, blending together an administrative, business, and implementation expertise. With robust administrative support and a focus on the city's growth, this initiative serves as a pilot project in placemaking. Chhappan, a food lover's paradise, is Indore's first fully pedestrianised public hub, integrating spaces for eating, working, and shopping.

The project has become a landmark, enhancing the city's image and fostering a sense of belonging by providing spaces for community activities such as street plays, selfie points, and venues for various campaigns. As a pioneering model for people-centric public spaces, it sets a new benchmark for urban development, creating a warm and welcoming inclusive public space.

Chhatri Chowk - Ujjain

The congested areas in Ujjain's old city were revitalised by integrating architecture and urban design as part of the Chhatri Chowk revival project. The problem was more to do with the road design conditions and treatment of street edges than with the limited road width. Such areas often require straightforward placemaking solutions for improvement in aesthetic appeal and functional usage. Ujjain, known as the city of Mahakal, hosts the Mahakal public procession multiple times. Therefore, the objective here was to revive Chhatri Chowk and create a public plaza for people to watch the public procession.

Cities Tell stories

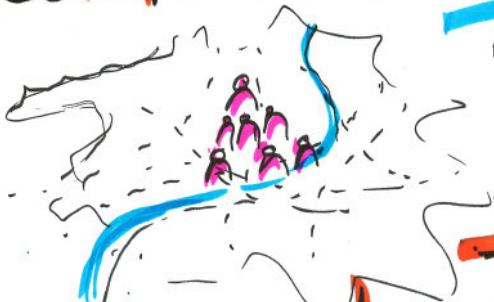
Landscape Art.
Sujata Hingotani



open space

- good mental health
- better climate
- growth. ↑

Compact cities.



need to bring
people in the
center of
cities

Pune

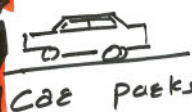
Jt M. RD.



+ Parking + Pedestrian + shops -

Delhi

Car-centric infra.



Car parks



Pedestrian.

People Centric infra.

SRINAGAR

→ Lal Chowk.

Positive
city

← ← ← Negativity



ghanta
ghar.
Chowk

Doodle by - Gautam. Ghawalkar.

NILA

nilaa.org



@nishantlall



@Nishant Lall

ABOUT

Nilaa Architecture and Urban Design, established in Boston in 2009 and relocated to New Delhi in 2010, specialises in innovative architecture and urban design projects. Led by Nishant Lall, the agency has extensive expertise in international urban renewal and regeneration initiatives. The agency's award-winning projects include the Patna Riverfront Project, Rajaswa Bhawan, and the North Point Master Plan in Cambridge, USA, showcasing their commitment to improving urban spaces.



Nishant Lall
Founder

Nishant Lall is an architect and urban design professional with over 18 years of global experience. He has taught at the Boston Architectural Center and is currently a visiting faculty at the School of Planning and Architecture. He has served on several professional groups, including as an Urban Design Advisor for World Bank India and a member of the Executive Council at IUDI India. He has contributed to award-winning projects and published numerous articles, enhancing the field of architecture and urban design.

RETHINKING URBAN REVITALIZATION

Key projects focusing on “Rethinking Urban Revitalization – Understanding Natural Capital Approach” has been discussed. The Riverfront Urban Initiative is a 6km public spaces project along River Ganga at Patna, India centered around a walking promenade and 4 public facility buildings. The Karol Bagh project focuses on increasing pedestrian circulation through dense areas of the old city via revival of chowks and reclaiming space of the streets from parked cars for pedestrian movement. The Kutch project aims to restore the degraded ecology of the site while catalyzing the desert ecology along with creating a series of community courtyards spaces for users.



Aerial view of Patna Riverfront site with proposed elements.



Pedestrian friendly streets of Karol Bagh



Riverfront revitalization at ITO, Delhi



Traditional Sun and Water festival 'Chatt' celebrated on the Patna riverfront. It is used by thousands daily and 2 million people during Chatt festival in Oct-Nov yearly.

UNDERSTANDING A NATURAL CAPITAL APPROACH FOR RESILIENCE

Cities worldwide are grappling with environmental challenges, prompting a crucial shift towards embracing nature as a valuable asset. This shift transcends professional boundaries, involving architects, landscape designers, and urban planners alike. Central to this approach is the recognition of larger geographical contexts, such as the Ganga River Basin, which serves as a pivotal backdrop for understanding urbanisation in India. Extensive governmental research on water security and scarcity across 25 river basins provides invaluable insights for urban design professionals. The utilisation of such data sparks essential debates on effectively integrating environmental considerations into urban planning strategies.

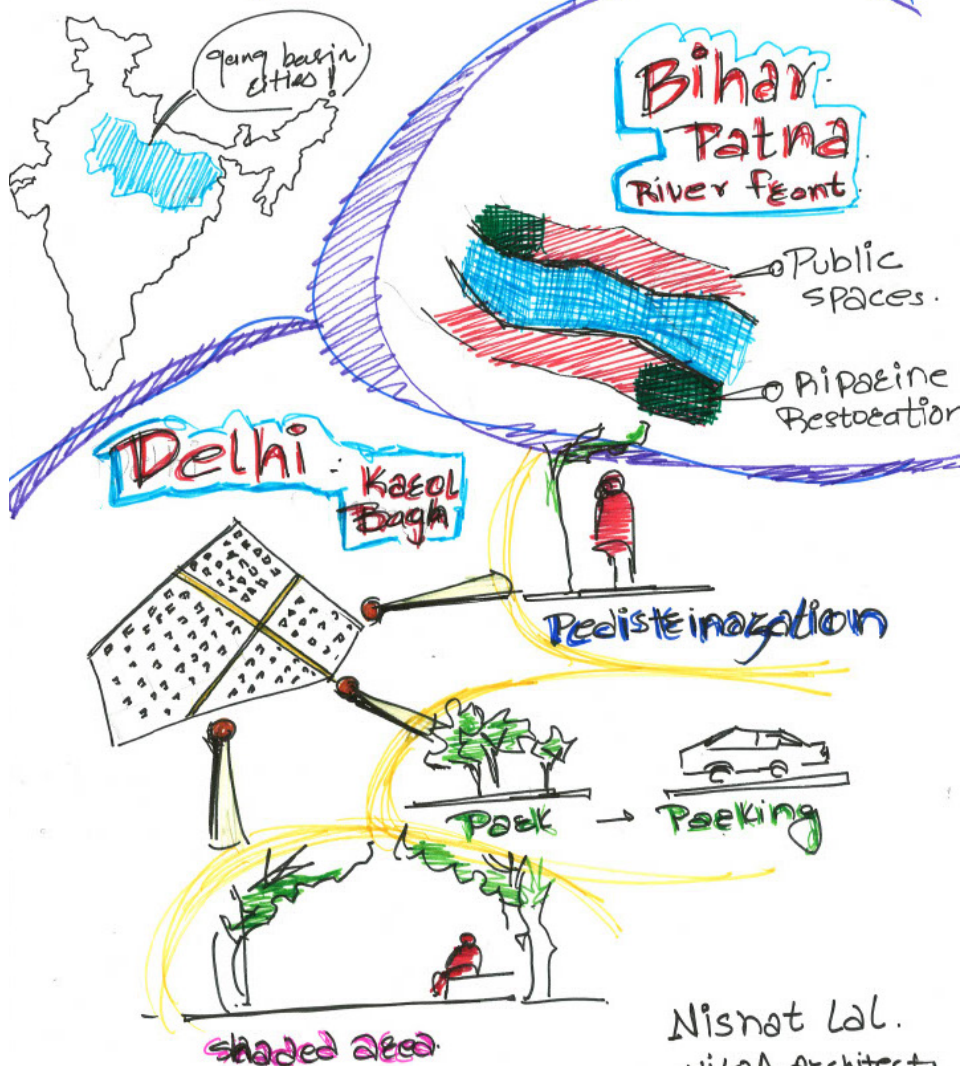
Patna Riverfront Project

This project has transformed a flood-prone area along the Ganga River in Patna. Spanning a stretch of about 7 kilometres, the project focused on developing walkways, enhancing flood resilience, and implementing supporting infrastructure initiatives. Public amenities such as crematoriums, ecology centres, and community halls were also incorporated in this area. Notably, the project garnered recognition from the American Institute of Architects (AIA) by winning the Inclusive Design Excellence Award 2022, showcasing its innovative approach to addressing environmental challenges while enhancing urban infrastructure.

Understanding Core City Areas

Reflecting on the projects undertaken in Karol Bagh, Paharganj, and Pusa Agricultural Research Institute, the talk shed light on how some of Delhi's most productive regions have changed. The districts' strong ties to nature were brought to light by looking at the historical background. Delhi's master plans recognize these ties as unique assets and encourage pedestrian-friendly surroundings. One of Delhi's largest markets, Karol Bagh, is noteworthy and inspired a master plan that prioritises walkability. This was made possible within the dense areas of the old city via revival of chowks and reclaiming space of the streets from parked cars for pedestrian movement. Programs such as the 'Streets and Plaza Program' and the 'Park and Places Program' are reclaiming public areas and improving pedestrian realms. Other projects such as Dakh Bazaar shaded street program and urban acupuncture in Paharganj also demonstrate how urban design strategies when implemented properly make a difference to the quality of public spaces.

Rethinking Urban Revitalization..





Session 3

Urban expansion - Rajkot Smart City

Saumil Mewada

Place People Practice

Nishita Parmar & Kishan Shah

Accessible Cities

Shravan Kumar

INI DESIGN STUDIO

inidesignstudio.com



@inidesignstudio



@INI Design Studio

ABOUT

INI Design Studio is a multi-disciplinary, independently owned Collaborative design practice. Our work encompasses planning, architecture, engineering and design-built services for many sectors that cut across the sustainable built environment. INI team, with its rich international experience and expertise dedicated to excellence in design, has a strong record of successfully delivering sustainable designs for our clients with integrity, team spirit, and best practices, both here in India and internationally. Our concepts integrate architecture, engineering, infrastructure engineering, urban design, regional planning, landscape design, interior design, and environmental design by incorporating cutting-edge innovation for energy efficiency and sustainability into the design of our projects. Having experienced the practice and cultures of developed countries and being aware of the prevalent conditions in developing countries, we see design as a bridge that could bring the two worlds closer and bind people together, helping them move along with the changing times.



Saumil Mewada
Director | Architecture
& Urban Planning

Saumil is a registered architect in India, with a Masters in Urban Design from Carnegie Mellon University in the U.S., and has over 20 years of experience. He has worked on various projects providing master planning, urban design, building design, and landscape design services. He has worked with various teams and in varied roles across the US, UAE, and India. With a strong design focus, and an attitude of inventive problem solving, Saumil strives to create and contribute towards developing design solutions that help build better communities.

He believes in a collaborative work environment and that ideas are borne out of creative dialogue between the client and the design team. Saumil is sensitive towards the culture and context of a local region, and believes that design should reflect culture, time, and place. This open and flexible approach has allowed Saumil to contribute to many notable projects.

URBAN EXPANSION - RAJKOT SMART CITY

The project involves development of a Green Field Area covering approximately 930 acres of land with an estimated project cost of Rs 2100 cr. The project is envisaged to have world class, Smart physical infrastructure with utilities that are environment friendly, sustainable, functionally smart and technology driven. The design emphasizes on developing walkable localities and promoting a multi-modal transport network. Providing an enabling design for a cohesive NMT network is one of the salient features of the project. Preserving and developing open spaces such as parks, lake front and other recreational spaces for a vibrant public domain and also to maintain the eco-balance is another key feature of the design. The plan focuses on developing mixed land use to enhance the efficiency of land use and create a pool of compatible activities close to one another.



URBAN EXPANSION - RAJKOT SMART CITY

INI Design Studio executes a range of urban design projects deploying different contextual strategies. Innovative approaches and methodologies which proved to be integral components for successful implementation of certain projects were presented.

Urban Design Execution

A brief overview of various projects was provided - including the Redevelopment of the Kedarnath temple precinct, the Badrinath Master Plan Development, the Sea Face Area of Dumas, the Development of Dharoi Dam as a sustainable tourist and pilgrim destination, the Shivrajpur Beachfront Development, TOD corridor and street design projects, and the Bengaluru Signature Business Park.

Rajkot Smart City - Area Based Development (ABD)

The project involves development of a Green Field Area covering approximately 930 acres of land with an estimated project cost of INR 2100 cr. It is envisaged to have world class, smart physical infrastructure with utilities that are environment friendly, sustainable, functionally smart and technology driven. The design emphasises on developing walkable localities and promoting a multi-modal transport network. Providing an enabling design for a cohesive non-motorized transport network is one of the salient features of the project. Preserving and developing open spaces such as parks, lakefront and other recreational spaces for a vibrant public domain and also to maintain the eco-balance is another key feature of the design.

The master plan, which spanned four years of meticulous design and implementation, focused on developing mixed land use to enhance the efficiency of land use and create a pool of compatible activities close to one another. These included the reconstitution of public land to optimise use, the determination of appropriate Floor Space Index (FSI) to guide development intensity, and the creation of a robust road network and Bus Rapid Transit System (BRTS) to promote non-motorized transportation. Additionally, architectural controls were established to ensure a harmonious and sustainable urban landscape. These strategies were further supported by a Town Planning (TP) scheme, which facilitated the cohesive integration of zonal development into a unified urban realm.

This project under the Smart Cities Mission extensively involved stakeholder consultations - right from site identification to design, ensuring the project was rooted in community needs and aspirations.

URBAN EXPANSION-RAJKOT SMART CITY

Saumil Mewda
INI Studio

Rajkot 907 Acres

Smart city

Area Based Development.

Rejuvenate exis. lake

Vibrant public domain

Infra develop.

developing open spaces & parks.

MMT + NMT

Mixed Land use.

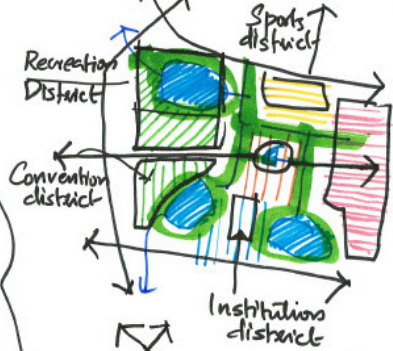
Green network

Sustainable, Smart, Livable, Inclusive and Iconic City of Gujarat

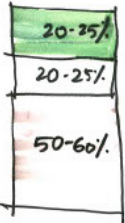
Option 1 Green field.

- 13% Social Infrastructure
- 4% Sale for Commercial
- 2% Sale for Residential
- 2% S.E.W.S.H
- 4% Green

Design strategy

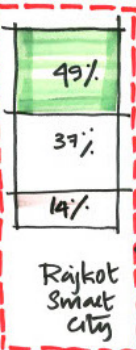


Indian Cities



Indian Cities

Cities Rec.



Rajkot Smart City

WOW

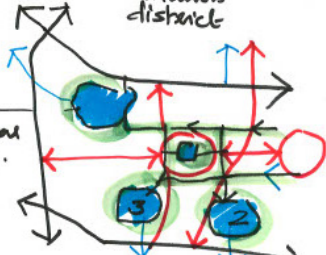
public realm %

Built.

Private open space.

LAND OPTIMIZATION STUDY CHART

Atal Sahayra Lake.



Identifying and Connecting the Blue
STRUCTURE PLAN

COMPARTMENT S4

compartments4.com



@compartment_s4



@Compartment S4

ABOUT

Established in 2017, Compartment S4 is a collaborative architecture firm with studios in Ahmedabad, Mumbai, and Bangalore. They are a multidisciplinary practice, offering an array of design services encompassing residential architecture, commercial architecture, urban design, urban planning, interior design, rural and social infrastructure, landscape architecture, as well as research and publication. Co-founded by 8 partners, Compartment S4 operates as a collective committed to delivering user-centric architecture solutions deeply rooted in their immediate surroundings. Through an iterative design process, they aim to achieve sustainability on social, economic, and environmental fronts with the primary focus being, “to create enhanced spatial experiences”. Leveraging their team expertise spanning the entire design and construction spectrum, they are equipped to address the diverse aspects of projects, regardless of their size or type. Their practice is steered by rigorous research and dialogue, striving to create resilient built environments. With a deep sense of purpose, they endeavour to shape spaces that harmonies with both human needs and the natural world. CS4 is a practice with conscience.



Nishita Parmar

Co-Founder | Architect

Nishita, an architect and urbanist, primarily works on large-scale, public-facing projects. She strives to balance city and people's needs, leading to academic explorations of urban issues. Her design solutions, backed by data and analytics, are translated into actionable solutions. With experience in both rural and urban contexts, she graduated from CEPT University, pursued urban studies at IIHS, Bengaluru, and gained management knowledge from IIM Bombay. She aspires to guide Compartment S4 towards strategic success.



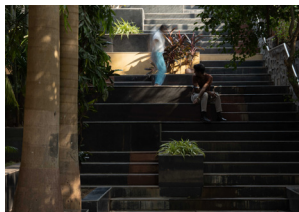
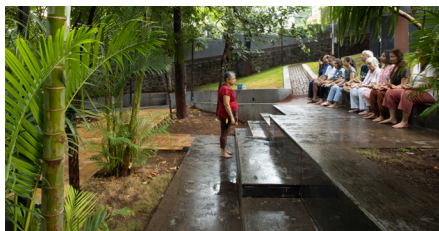
Kishan Shah

Co-Founder | Architect

Kishan, an architect, uses design to create functional aesthetic spaces. His micro to macro approach and expressive visual language shape refined design solutions. His multidisciplinary work enhances sensory user experiences in residences, workspaces, and hospitality projects. Passionate about research, writing, and advocacy, his contributions appear in publications like UnMute and Compartment S4. He co-founded “The Nomad Cafe” in Ahmedabad, merging his passion for film curation and critique. Kishan bridges the gap between theory and practice in the built environment.

PEOPLE PLACE PRACTICE

Nestled in the heart of Nepean Sea Road in Mumbai, “Nepean Greens” is a versatile community space accessible to all. Formerly a neglected set of steps alongside an abandoned garden, this area underwent a transformation into a stepped plaza, seamlessly merging the two spaces. The result is an expansive public venue featuring spacious platforms, terraces, lush sloping lawns, a continuous ramp, and diverse seating options. Beyond serving as a rest area for people waiting at the bus stop, these spaces cater to various daily activities such as evening gatherings, morning yoga sessions, cardio exercises, and engaging in board games. They are also well-suited for hosting small-scale events like concerts, flea markets, informal exhibitions and reading sessions. Nepean Sea Road, known to be an upscale area, lacked a true sense of neighborhood. Through extensive research and observation, it was evident that the project aimed to reinvigorate the street by creating a lively space that encourages people to engage with the city’s fabric. Commissioned by the BMC, the adaptable design of the plaza serves as an open canvas, facilitating various public activities without the need for additional props or furniture. Additionally, the design seamlessly connects a linear stretch of gardens flanking both sides of the plaza in front of the buildings, providing a walking experience that guides individuals towards the plaza.



PLACE, PEOPLE, PRACTICE

The importance of placemaking exists not only in cities but also in rural and semi-urban areas. For this we deploy three key principles - repurpose, recalibrate, and reprogramming.

Nepean Greens - Mumbai

A Mumbai streetscape competition led to the transformation of a sterile staircase into a vibrant community space. Formerly used solely for pedestrian access to the city streets, this staircase was repurposed into a plaza. The project retained the existing greenery while opening up its edges and creating smaller public areas as plazas to attract more visitors. A key aspect of the project was the incorporation of flexible furniture design within the steps, allowing for seating at various levels. Today, this space serves as a canvas for diverse activities, featuring multiple entry points via curved pathways and a more transparent layout.

Vasant Dada Patil Garden - Mumbai

A neglected public garden next to the Mumbai Central Railway Station was repurposed into a leisure park by creating an active park edge. The project involved converting the high compound walls into a porous railing and sloping the ground towards the edges to provide natural seating.

Sensorium Park, Nainital

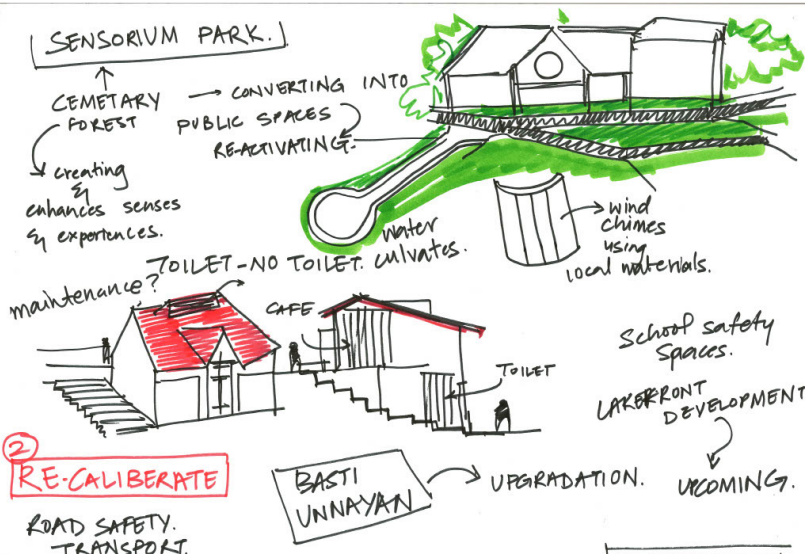
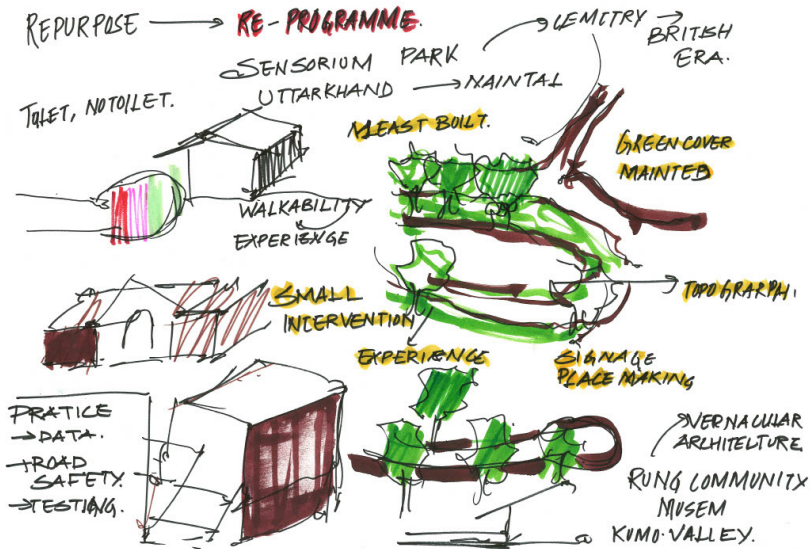
A crematorium was reprogrammed into a sensorium park in the outskirts of Nainital in Uttarakhand. The site, largely a forest with pristine flora and fauna, focused on ecological preservation, maintaining 95% of its green cover. The natural topography was studied, and water culverts were used as seating areas to engage visitors with the natural environment. Signage and installations were used to enhance placemaking and evoke sensory experiences, by placing these elements along exploratory routes with multiple paths.

Toilet - No Toilet

The 'Toilet - No Toilet' concept in Uttarakhand reprogrammed traditional toilets by incorporating a livelihood element. This innovative model features two levels: eateries and public seating on top, with toilets in the basement. Usually, the funds for sanitation infrastructure are plentiful, but maintenance funds are often lacking. This model addresses this issue and has gained traction, prompting the government to plan for its implementation in many other locations.

Rung Community Museum

This project showcased the transformation of an early 19th Century dharmshala into a community museum along with the revitalization of the street facade. The upper floors were repurposed as exhibition spaces, while the lower part was designated as a market area. The project emphasised retaining the vernacular architecture, achieved through the involvement of local artisans.



ASURE DESIGN STUDIO (INDIAN ENTITY OF SPACE GROUP)

ABOUT

At ADS (Asure Design Studio), our ethos centers around the principle of “Life at Centre,” integrating urban design principles with advanced technology to reduce carbon footprints and enhance liveability. We lead in integrating artificial intelligence into real-time construction through Building Information Modelling (BIM), advancing towards 4D to 6D levels. Our projects, spanning over 40 million square feet across India, include high-density commercial offices and innovative residential developments. Committed to shaping inclusive and resilient urban spaces, we pioneer future cities that embrace biodiversity and cultural diversity in symbiosis.



**Shravan kumar
Nagabandi**
CEO

An Architect and Urban Designer, has shaped vibrant, sustainable urban spaces for 15 years with the SPACE Group in South Korea. As CEO of Asure Design Studio (an Indian entity of SPACE Group) for the past decade, he's blended his experiences with the complexities of the Indian architectural milieu. His team has completed projects across 40 million square feet, ranging from high-density commercial offices to innovative residential developments. He's an Architecture graduate from CEPT University specialising in Urban Design.

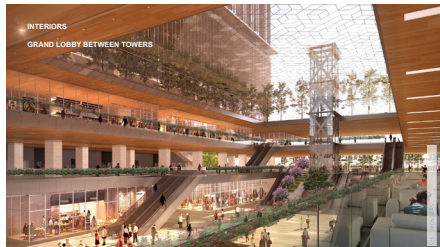
ACCESSIBLE CITIES

“LIFE HUB”, IT CAMPUS, HYDERABAD _ PROJECT 01

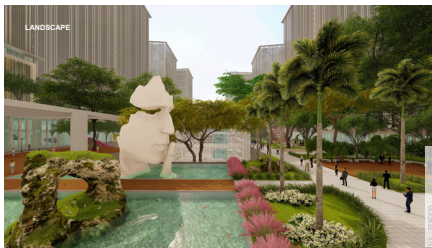
NEOPOLIS, a visionary project in Telangana's Kokapet, aims to decentralize the Financial district. “Life HUB” by MyHome Group, spanning 69 acres, offers 26 million SFT of office space and 1 million SFT of mixed-use facilities. It prioritizes user experience and life safety, setting precedents in landscape, security, and innovative design. Breaking stereotypes, it emphasizes joy and love, with unique work environments like a bird sanctuary. Supporting facilities include food courts, games, and banquets. “Life at center” drives the development, redefining workspaces and focusing on human experience, making LIFE HUB a paradigm shift in urban design.



Southwest view of Tower_01, Phase_01, showcasing its 2.2 Million SFT space, standing tall at 159.5 meters with 7 basements.



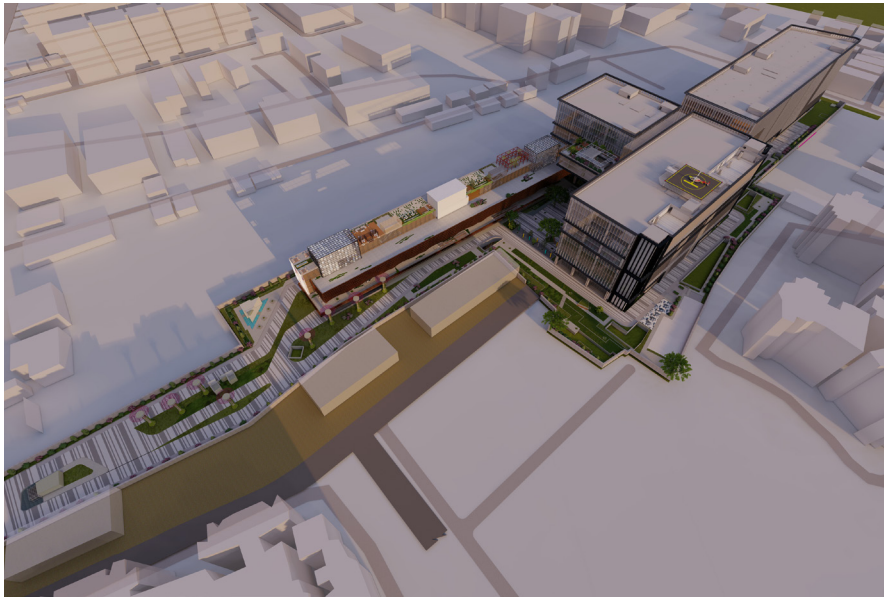
Grand central lobby spanning 6700 Sq.Mts, with 3-level access, accommodating pedestrian traffic of 44,000 people across 2 towers.



Central Park: 3 large squares, 1.5 Acres each, designed on 2 levels. Vehicular-free, emphasizing biodiversity. Nature at its heart, inviting exploration and tranquility.



“Three bustling bus terminals with 120 bays, accommodating 1250 buses 24/7. Located in Basement 1, with 6 entrances and 4 exits leading to the site periphery.”



An aerial shot captures the campus's expansive layout, showcasing the Terminal building at the entrance and a central axis guiding towards the Grand Central Plaza.



Grand Central plaza, a celebration space, features the iconic floating Shahi Plaza, elevated 36 meters from ground level, fostering multi-level landscape experiences.

SHAHI UNIT_7, IT CAMPUS, BANGALORE _ PROJECT 02

Shahi IT Park, Bangalore, is a pioneering project by Shahi Exports, prioritizing sustainability and human-centric design. Spanning 12 acres with 2.2 million SFT of space, it aims to accommodate 22,000 direct employees. Embracing multimodal traffic design, safety, diversity in programs, and a vehicular-free campus, it sets new standards. With 100% landscape area and amenity-rich spaces, it fosters wellness and community. Experiential architecture and environmental sustainability drive its design, ensuring human well-being and environmental stewardship. By prioritizing economy, it aims for financial viability while creating a sustainable, vibrant future workplace. Shahi IT Park redefines workspaces, focusing on experience, sustainability, and community.



Digital plaza, with 12-meter high transition space connecting T1 and T2, fostering socialization and inspiration for employees.



Elevated landscape with > 100% site area, enhancing campus vibrancy and accessibility.



Lobby: A vibrant nexus merging culture, nature, and social essence. Redefining workspaces for spiritual uplift and joy through color and contrast.

ACCESSIBLE CITIES

Urban Designers play a pivotal role in fostering inclusive urban environments. They can unlock urban space and promote equitable access to spaces with well-designed edges next to privately-owned land in cities. It also underscored that by leveraging their multidisciplinary expertise in urban planning, architecture, and real estate, urban designers could lead this transformative movement. The T-Hub Hyderabad is a good case study of how the design of a cultural centre within a mixed-use innovation hub's office space reclaims accessible public space.

Eco Bowl - Bangalore

This project integrated a biodiversity lake, occupying approximately 25% of the 26-acre site's buildable land. Advocating for high-density compact development led to the construction of high-rise residential towers, thereby releasing land for community purposes. It underscored how urban designers' interdisciplinary proficiency in street design, planning, biodiversity, and sustainability renders the profession well-suited for spearheading such initiatives.

Life Hub IT Campus - Hyderabad

NEOPOLIS, a visionary project in Telangana's Kokapet, aims to decentralise the financial district. 'Life HUB' by MyHome Group, spanning 69 acres, offers 26 million sq. ft. of office space and 1 million sq. ft. of mixed-use facilities. It prioritises user experience and life safety, setting precedents in landscape, security, and innovative design. Breaking stereotypes, it emphasises joy and love, with unique work environments like a bird sanctuary. Supporting facilities include food courts, games, and banquets.

The project, hailed as the nation's largest IT campus, is envisioned to create approximately 350,000 jobs. The proposal carefully addresses the implications of such a sizable endeavour, on transportation, congestion, security, ecology, architecture, and energy consumption. The design strategy advocates for an 'office as a village' concept, by balancing a gross FSI of 7.0, emphasising compact development, and repurposing the site as accessible public space.

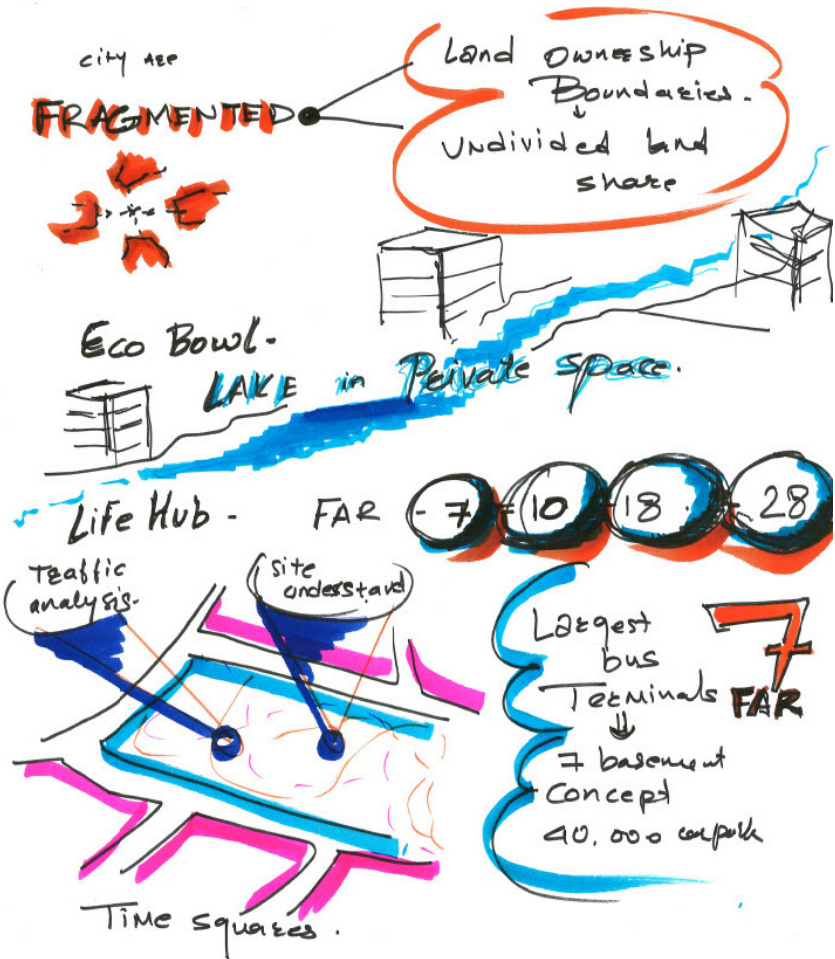
Notably, 18 acres out of the 69-acre site are dedicated to landscaping, enhancing the project's aesthetic and environmental appeal. The climate-sensitive environment promises a pleasant work atmosphere. Common spaces such as open squares, terraces, and congregational areas are created at various levels in this campus.

Through comprehensive urban design, the project fosters a scalable, dynamic, and engaging campus environment, aiming to revolutionise work culture regarding landscape, efficiency, transportation, and security. The execution of this project also involved continuous monitoring via BIM and other technologies.

Accessible cities

By Shrivani Kumar.

Typo Morphological Approach.





Session 4

Beachfront Development at Daman

Ankit Mehta

Bridging Scales in Urban Design: Challenges and Opportunities in Indian Urban Scenario

Vishal Shah

Mahanadi Waterfront Rejuvenation

Nithya Ramesh

HCP

hcp.co.in



@hcp.architecture.urbanism



@HCP Design, Planning &
Management Pvt. Ltd.

ABOUT

HCP is a multi-disciplinary design practice that provides professional services in architectural design, interior design, engineering, urban design, urban planning, communications, project management, and construction management. Their design philosophy and collaborative approach allows them to offer an expansive array of non-traditional design services and ensure specialised technical knowledge application, in turn, building credibility for the long term.

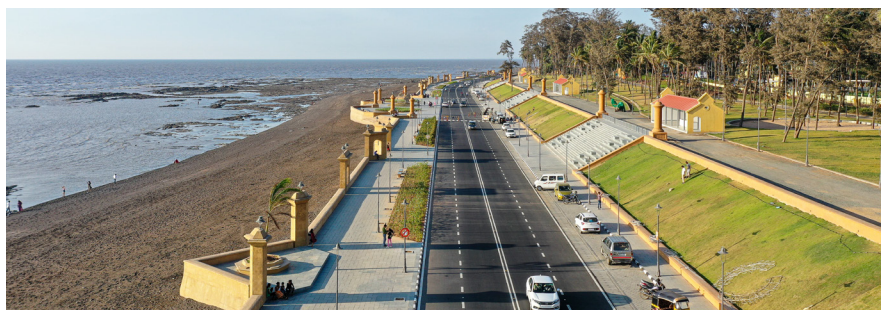


Ankit Mehta
Associate

With a solid foundation in architecture from IPSA, Rajkot, and an advanced specialisation in Urban Design from CEPT University. His journey began with an internship at Kulbhushan Jain Architects, which paved the way for a pivotal role at HCP since 2014. His notable contributions include the transformative Sabarmati Riverfront development and the vital Conservation and Rejuvenation project of the Subernrekha River in Ranchi, showcasing a commitment to sustainable and impactful urban design.

BEACHFRONT DEVELOPMENT AT DAMAN

Daman is a seaside town in the Indian Union territory of Dadra and Nagar Haveli and Daman and Diu. Over the past few years, urban stress and erratic tidal conditions have taken a toll on the town's 5-km long seafront, causing issues of pollution, unorganized parking, poor street design and dilapidation of existing public spaces. The Daman Seafront Development Project creates a quality public realm for the town's tourists and residents, while protecting from high tide conditions. The project integrates the seafront with comprehensively designed streets at Chhapli Sheri Beach, Jampore Beach, and Devka Beach. It also uplifts existing public spaces such as Devka Garden and Moti Daman Fort.



BEACHFRONT DEVELOPMENT AT DAMAN

Daman is a seaside town in the Indian Union territory of Dadra and Nagar Haveli and Daman and Diu. Over the past few years, urban stress and erratic tidal conditions have taken a toll on the town's 5-kilometre-long seafront, causing issues of pollution, unorganised parking, poor street design and dilapidation of existing public spaces.

The Daman Seafront Development Project creates a quality public realm for the town's tourists and residents, while protecting from high tide conditions. It aimed to transform the area into a resilient, accessible, and vibrant public space while preserving its historical and cultural heritage. The project integrates the seafront with comprehensively designed streets at Chhapli Sheri Beach, Jampore Beach, and Devka Beach. It also uplifts existing public spaces such as Devka Garden and Moti Daman Fort.

Protecting the Shoreline and Celebrating Context

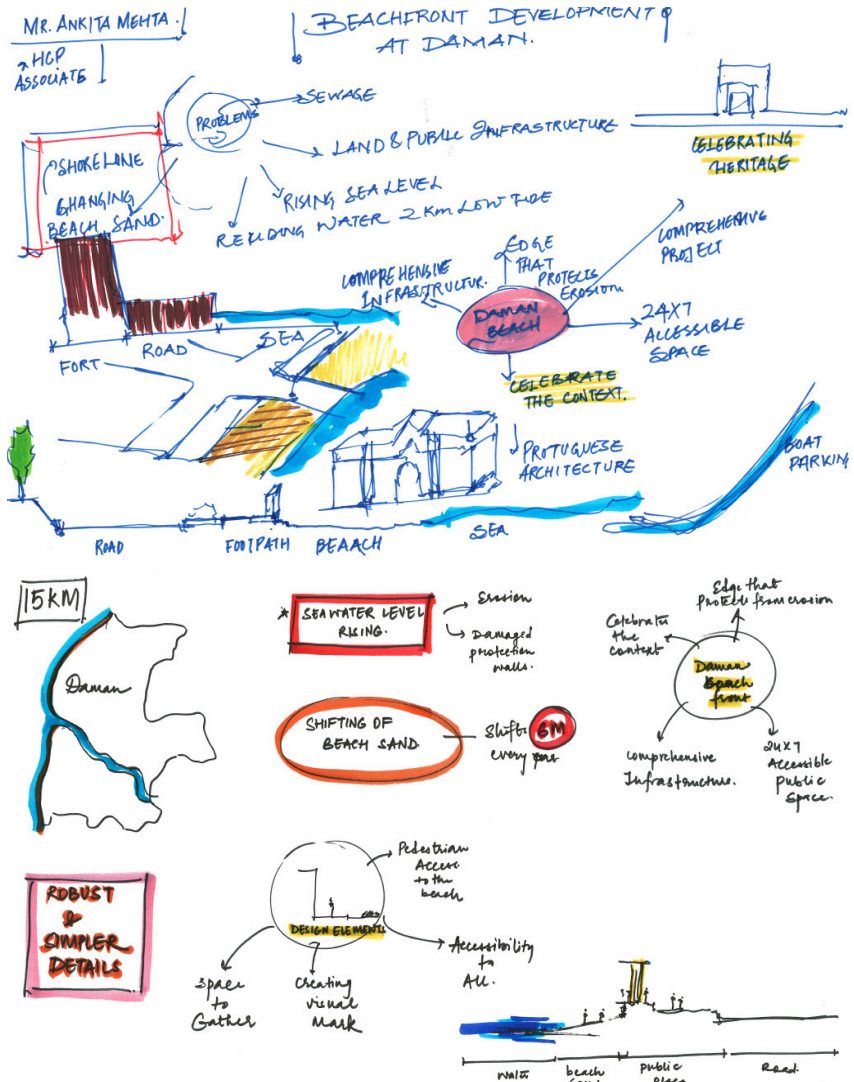
The design prioritised shoreline protection and celebrated Daman's historical context, using a diaphragm wall for erosion control and integrating modern elements with Portuguese-inspired architecture. The use of materials like coloured rainforest concrete ensured durability and aesthetics, while modular design principles allowed for flexible and efficient construction. The outcome was a transformed Daman city, with revitalised historical forts and public spaces. The forts were integrated into the urban landscape, becoming engaging public spaces free from previous disruptions.

Enhancing Accessibility and Upgrading Infrastructure

Enhancing public spaces and accessibility was crucial. Ramps were added for universal access, amenities were strategically placed, and modular urban furniture and shaded areas were introduced. Infrastructure lines were carefully planned to minimise disruptions and ensure the longevity of public spaces. Stormwater management, waste disposal, and emergency access were innovatively addressed to create a resilient urban environment capable of withstanding climate change impacts. Improved infrastructure and public spaces have enhanced residents' quality of life, promoting social interaction and community well-being.

Economic Impact and Resilience

The project's economic and social impact has been significant. The vibrant public realm now offers a range of recreational and cultural activities, boosting tourism and local businesses. The project's focus on resilience and sustainability ensures that Daman can withstand future challenges, making it a model for coastal urban transformation.



AANGAN ARCHITECTS

aanganarchitects.org



@aangan_architects



@aangan architects

ABOUT

AANGAN Architects is a design collaboration committed to creating sensible and responsive built environments, established in 2001. The firm's name, 'AANGAN', is a Hindi term for the transitional forecourt of a traditional Indian house, symbolising a pause or phase of transition. This metaphorically represents their design philosophy, promoting innovative and alternative thinking, and sustainable practices from the conceptual stage. Currently, AANGAN Architects handles projects related to Residential and Institutional Architecture, Interior Architecture, Urban Design, and Landscape. The team is actively involved in academics and collaborates with like-minded firms, contributing to the betterment of living environments. They also have a wide consultant base for structural engineering, Landscape Design, Services and Infrastructure design, and arts and project management.



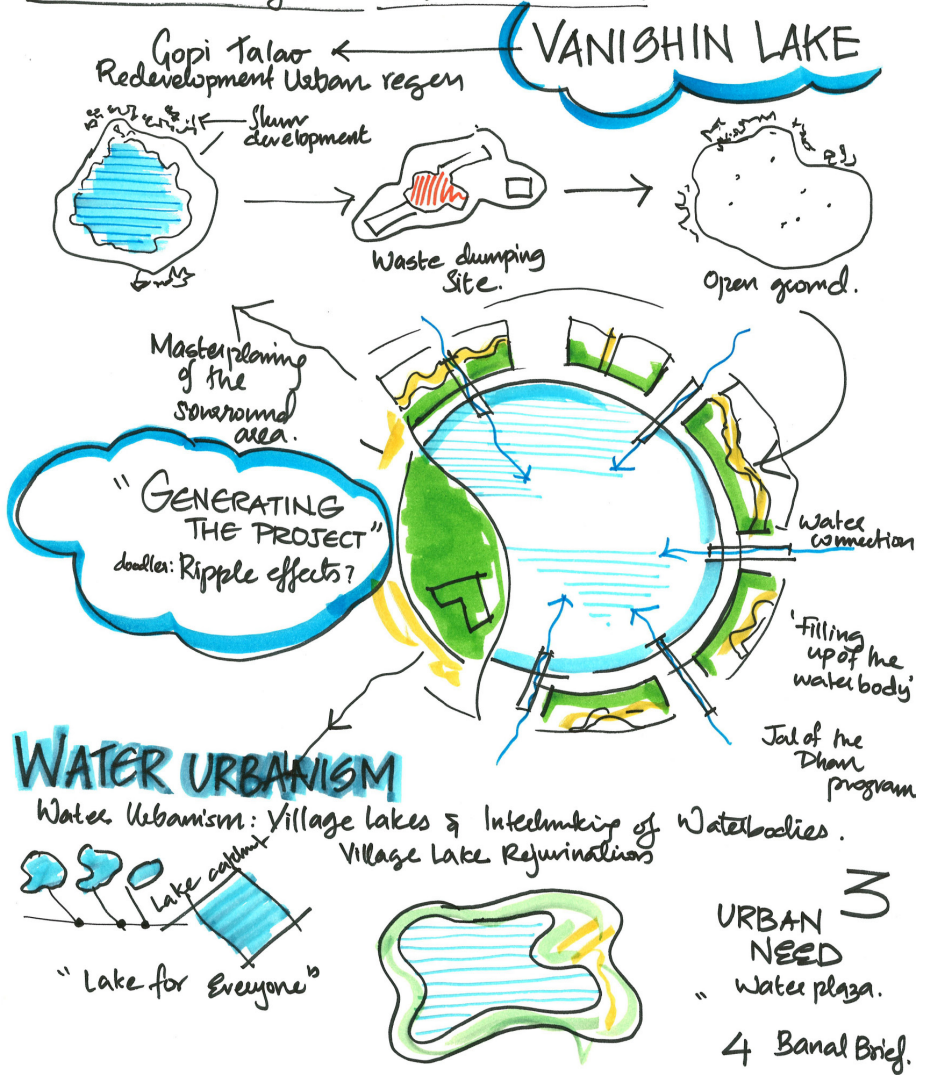
Vishal Shah

Partner | Architecture &
Urban Planning

An architect and urban planner with over two decades of experience in practice and academics, strikes a balance between practice and preaching. His design methodology, rooted in research, bridges tradition and change. As an advocate for design accessible to the masses, he has spearheaded urban design and place-making projects. He collaborated on the International Urban Co-operation (IUC) program for Urban Water Management between Surat and Rotterdam. His firm, Aangan Collaborative LLP, has received accolades for innovative projects, including the JK Architect of The Year Award 2019 and ARCASIA Award 2017 for Socially Responsible Architecture. Vishal's global involvement extends to climate change initiatives and knowledge exchange programs.

BRIDGING SCALES IN URBAN DESIGN

Story of a vanishing Lake: Birth - Death - Rebirth



GOPI TALAV - SURAT

The project aimed to revitalise the historical area of Gopi Talav in Surat focusing on urban design and celebrating water as a central theme. The intent was to revive the lake, transform it into an accessible public landscape, and create a vibrant walkway that would enhance the area's cultural and environmental significance. This initiative sought to not only restore the historical and cultural heritage of Gopi Talav but also create a sustainable and inclusive urban space for the community.

Design Interventions

The design interventions involved restoring the historical structures around Gopi Talav and creating a walkway allowing people to access and enjoy the lake. The project included measures to manage stormwater and improve the overall environment of the area. Special attention was given to celebrating water as a central element of the design, with features that highlighted its importance in the local culture and history. The design focused on creating a vibrant and engaging public space that would attract visitors and foster a sense of community.

Outcomes

The outcome of the project was a transformed Gopi Talav, with a revived lake and a vibrant walkway that had become a popular destination for residents and tourists alike. The accessible public landscape created a sense of community and pride among the people of Surat, who now had a beautiful and meaningful space to enjoy. The project's success in celebrating water and reviving the lake had a positive impact on the environment, with improved water management and a more sustainable urban design. The project also contributed to the economic development of the area, as it became a hub for cultural and recreational activities.

The project in Gopi Talav demonstrates the power of urban design to transform neglected spaces into vibrant, accessible, and culturally significant landscapes. By celebrating water and reviving the lake, the project has not only improved the quality of life for the people of Surat but also highlighted the importance of sustainable development and environmental conservation.

WATER URBANISM

VISHAL SHAH

01. STORY OF VANISHING LAKES

GOPI TALAO



02. THAT SPARK



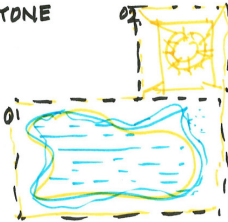
03. THE CHALLENGES !

DINDOLI LAKE —
+
FLOWER GARDEN

— Water Urbanism

LAKE
FOR
EVERYONE

INTRE
LINKING
LAKES



MAKING EXCLESIVITY ACCESSIBLE

— URBAN ART STREET —

Vibrant walkway



— SAKSHI KOTALWAR

SURAT — COMPACT CITIES

↓
Landscape



↓
Storm water



↓
Water system



↓
Celebrated by People



↓
Affordable
Accessible
Cultural

↓ Urban Oasis

— 2015 December. —

— KHEL KUND



Jana Urban Space

janausp.org



@janaurbanspace



@Jana Urban Space

ABOUT

Jana Urban Space aims to improve the quality of life in Indian cities by working towards sustainable urban development. It has been involved in various projects related to urban planning, infrastructure, and policy-making. They work with various stakeholders, including governments, private sector organizations, and citizens, to create more livable and equitable cities.



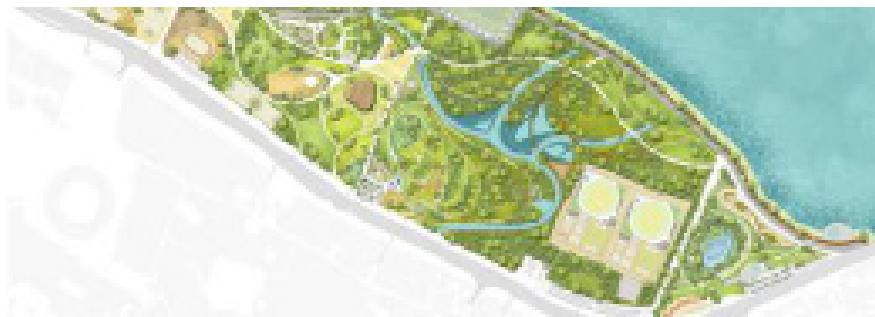
Nithya Ramesh

Director | Urban
Designer

Nithya leads transformative projects of great public value to improve India's cities. She spearheaded the execution of the first set of Tender SURE roads in Bengaluru, conceptualized and developed Tender SURE roads in different cities in India, waterfront development projects, and social infrastructure projects. Apart from managing design and drawing delivery, she handles client, government liaison, and community participation. Nithya engages with various organizations within the urban development sphere, reflecting the ethos of her organization.

MAHANADI WATERFRONT REJUVENATION

The Mahanadi Waterfront Development project aims to rejuvenate 426 acres of reclaimed land in the Mahanadi river in Cuttack. The project combines vibrant public space development with ecological development of the waterfront area – enhancing the riparian ecosystem, strategic edge engineering to prevent urban flooding, and developing a sponge landscape for storm water management. The proposal presents a framework for sustainable development providing the city of Cuttack with the much needed green open space and public space as a respite from the congested inner city area



Masterplan of the biodiversity park



Heritage village



Forest pavilion



Promenade

MAHANADI WATERFRONT REJUVENATION

This project proposal aims to transform the waterfront area in the Cuttack city of Odisha into a vibrant, accessible, and environmentally sustainable public space. It also aims to integrate art and cultural elements into the public spaces, fostering community engagement and creating a sense of place. The proposal focuses on the ecological development of the waterfront area – enhancing the riparian ecosystem, strategic edge engineering to prevent urban flooding, and developing a sponge landscape for stormwater management. It presents a framework for sustainable development providing the city of Cuttack with the much needed open, green and public space as a respite from the congested inner-city area.

Design Interventions

The design interventions include rejuvenating 426-acres of reclaimed land and creating a biodiversity park with no permanent construction by using only eco-friendly materials for temporary installations. It aims to revive the flora and fauna enhancing its environmental quality. The design includes creation of walkways and tree walks, allowing people to enjoy the natural beauty of the area.

Another key aspect of the design is the integration of art into the public spaces. Artists were engaged to create installations and artworks that reflect the local culture and heritage. These artworks are now installed in various parts of the city, enhancing its aesthetic appeal and cultural significance.

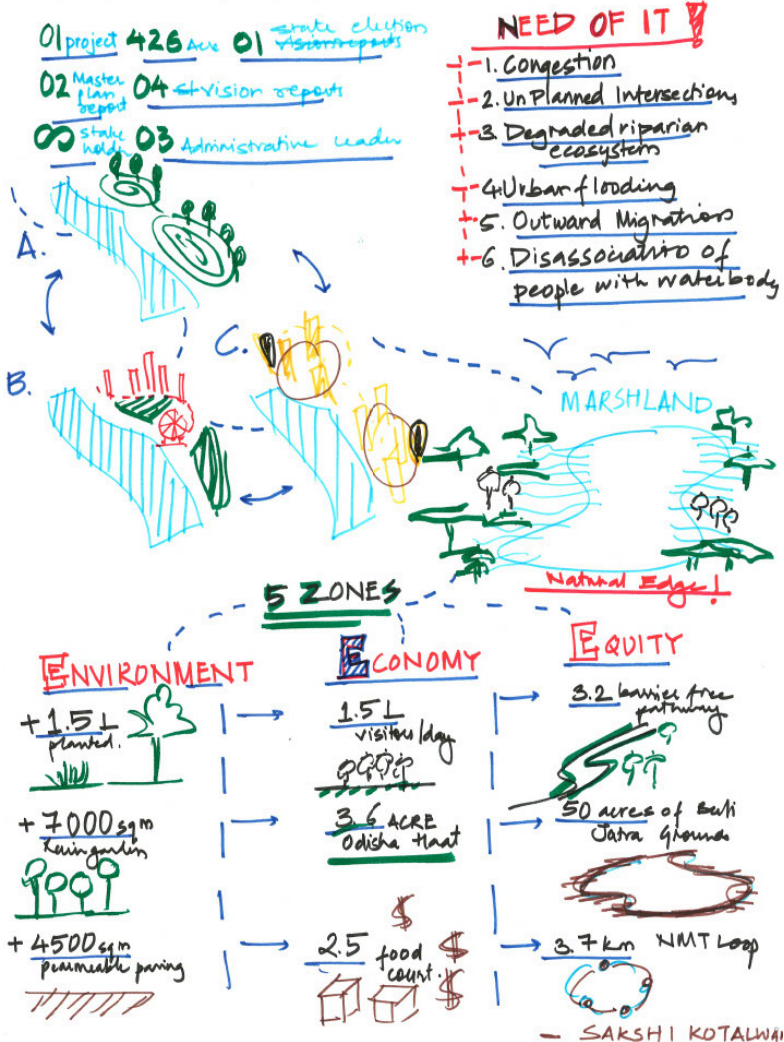
The project also includes the development of kiosks for local vendors, which will be rented only to them. This approach supports local businesses and ensures that the waterfront remains authentic to the local culture. Additionally, the design incorporates facilities such as libraries and public toilets, improving the overall experience for visitors.

Outcomes

The project has several outcomes, including the creation of a high-quality public space that is accessible to all. The temporary nature of the installations ensures that the park remains open and accessible, with no permanent structures blocking public access.

The integration of art and cultural elements has added to the city's cultural vibrancy and identity, making it a more attractive place to live and visit. The comprehensive development on the waterfront also considers factors such as internal supply chains, local job creation, and economic stimulation. In conclusion, the waterfront rejuvenation project represents a holistic approach to urban design, incorporating environmental sustainability, cultural vibrancy, and economic vitality.

MAHANADI - A STORY OF PERSEVERANCE.



CONCLUDING NOTE BY NARENDRA MANGWANI

We are glad that we could bring in this diverse pool of urban design practitioners and experts from across the country and facilitate this peer learning event. We are thankful to the past President of CEPT University, Dr. Bimal Patel to kickstart this annual 'Urban Design in India' CEPT Conference series last year and equally thankful to the current President, Mr. Barjor Mehta for his continued support. A vote of thanks and appreciation to students and faculty members from Faculty of Planning, CEPT University, and colleagues from CEPT Research and Development Foundation (CRDF) for successfully organising this conference and ensuring smooth rollout.

We are hopeful that the next 'Urban Design in India' CEPT Conference in May 2025 will continue to bring forth more enriching content and demonstration projects, providing a platform for practitioners and experts to contribute to the urban design discourse in the country.



CEPT
UNIVERSITY



CRDF CEPT RESEARCH
AND DEVELOPMENT
FOUNDATION

CEPT
UNIVERSITY



www.crdf.org.in

CEPT Research and Development
Foundation
CEPT University
Kasturbhai Lalbhai Campus
University Road, Navrangpura
Ahmedabad-380009
Gujarat, India